

Waimānalo Youth & Family Collaborative

Waimānalo Youth & Family Collaborative Center

PROGRAM BROCHURE

*“Every child filled with hope, grounded in cultural wisdom,
and thriving in their family, community and society.”*

Collaborative Board of Facilitators

Roy Brooks
Ramona Chinn
Keoki Fraser
Ilima Ho-Lastimosa
Eldon Kohatsu, Jr.
Gordon Mattos
Tai An Miao
Stephen Morse
James Torres

Collaborative Coordinator

Deanna Gonda



Youth & Family Collaborative

He keiki mea kupuna, He keiki mea makua

The Waimānalo Youth & Family Collaborative grew out of a cooperative effort to protect and nurture our most precious resources—our youth. We recognize our kuleana to embrace our ‘ohana and care for our community. We honor the traditions and hard work of our kupuna who continue to guide us along this journey.

Building on our rich heritage, a group of youth serving organizations initiated a strategic planning process launched in January 2009. Kupuna, makua and keiki participated in various retreats, planning sessions and talk story times. We provided our wisdom, mana`o and desires for the community and our keiki. We shared our struggles as well as our dreams.

Through this process, we defined the purpose of the Waimānalo Youth & Family Collaborative:

“To weave youth-serving organizations into a unified team and provide the space for comprehensive programs and activities for Waimānalo youth and their families”

We also defined the goals of the Collaborative, which are to:

- Promote collaborative relationships & arrangements to serve Waimānalo youth & their families
- Develop the Waimānalo youth and family collaborative organizational structure
- Develop the Waimānalo Youth and Family Collaborative Center Facilities

As we continue to build collaborative relations for the better coordination of programs and services, we invite you to join us in working together to serve the young people of Waimānalo.

Programs & Activities by Collaborative Partners

‘Ohana Support & Resources

Strengthening Hawaii's Families Workshops
Parent Support Services, ‘Ohana Conferencing,
Family Crisis Intervention, Teen Parent Mentoring,
Child Abuse Prevention, Family Camps/Retreats,
Early Childhood & Family Literacy

Health Promotion

Organic and Native Horticulture, Ho‘oponopono,
Public Health Services, Counseling Services, Weight
Training and Conditioning,
Suicide Prevention, Teen Parent Ante Natal Classes,
Sports Clinics, STD/HIV Prevention for Girls

Educational Support

College Support Programs, Cooking Classes , On-Campus School Support Services,
Youth Worker Training & Support, Youth Financial Literacy, Woodworking, Tutoring,
Early Childhood & Family Literacy Development, Youth Job Training/Work Programs,
Annual Family Health and Education Fair, Mechanical Training Classes, Support Resource Library
Media Training, Community Bulletin Board, Community (Interactive) Website, Alternative Education
School for Teen Parents, Hawaiian Language Classes, Computer Literacy/Education,
Youth Entrepreneurship

Youth Development

Youth Mentoring, Youth Life Coaching Services,
Youth Crisis Intervention, Youth Leadership
Development, Cultural Dance (Hula and
Tahitian), Cultural Site Restoration: Makawalu
Project, After School Girl's Program,
After School Youth Violence Prevention

Recreational Activities

Youth Camps, Remote Control Race Track, After
School Drop In Center / Game Room,
Community Dances, Annual Makahiki,
Community Concerts,
Retreat/Conference Facility,
Ropes Course

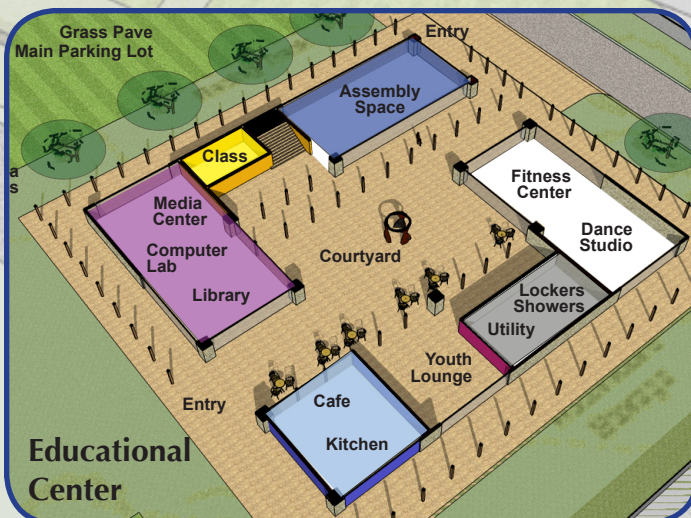
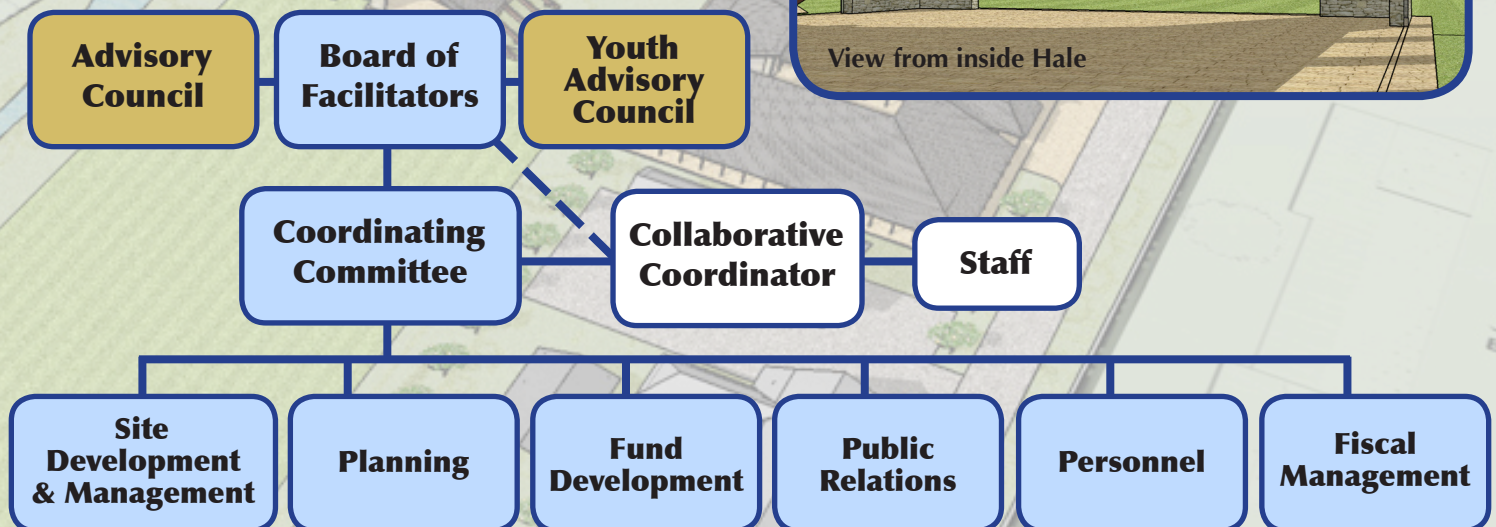
Site Diagram & Images

The background diagrams and bubbled images show the possible design solution developed from the design parameters developed by the collaborative and community



Organizational Structure

The chart below shows the basic organizational structure of the collaborative from the Board to the Sub Committees



Partner Organizations & Acknowledgements

On Site Partners

(Providing Services at Center)

- Nā Pono No Nā 'Ohana, Partners In Development
- Hui Ola Pono, UH School of Nursing
- CHAMP
- Asian/Pacific Islander Youth Violence Prevention Center
- God's Country Waimānalo
- Ke Ola Hou
- Friends of Waimānalo
- Blueprint for Change
- Waimānalo Teen Project
- O'lelo Community Television
- Coalition for a Drug Free Hawaii

Off Site Partners

- Te Ora Hou Aotearoa
- City & County of Honolulu, Dept. of Community Services, Community Revitalization Section
- Kokua 'Ohana
- Waimānalo Hawaiian Civic Club
- Public Health Nursing
- EPIC 'Ohana Counseling
- The Mediation Center of the Pacific
- University of Hawai'i: Dept of Urban & Regional Planning
- Community Children's Council, DOE
- Kupuna Church
- Kauhale O Waimānalo
- Alu Like
- UH: Public Policy Center

Supporters and Planning Retreat Participants

- Senator Daniel K. Inouye
- Congresswoman Mazie Hirono
- State Representative Chris Lee
- Hui Malama O Ke Kai
- Waimānalo Neighborhood Board
- Hope Chapel Waimanalo
- State Office of Youth Services
- Blanche Pope Elementary School
- Kailua High School
- Waimānalo Elementary and Intermediate School
- DOE School Based Behavioral Health
- Castle Wellness Center
- Waimānalo Co-operative Market
- HKL Castle Foundation
- Office of Hawaiian Affairs
- Queen Lili'uokalani Children's Center
- Parents and Children Together
- Waimānalo Hawaiian Homes Association
- DOH Child Adolescence Mental Health Division
- Waimānalo community youth and community members
- Hawaiian Civic Club of Waimānalo

HOW YOU CAN HELP!

Volunteers are needed to join a working committee!

- Site Development & Management
- Planning
- Fund Development
- Public Relations
- Personnel
- Fiscal Management

If you are interested, please contact:
Collaborative Coordinator, Deanna Gonda
Phone: (808) 206-4810 | Email: ddgonda@aol.com